

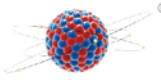
Anti- COL1A1 Antibody

NH-R-58-04

Product Type: Recombinant Rabbit monoclonal IgG, primary antibodies
Species reactivity: Human, Mouse, Cow
Applications: IF-Tissue Clearing
Clone number: ST58-04

Description:	The extensive family of COL gene products (collagens) is composed of several chain types, including fibrilforming interstitial collagens (types I, II, III and V) and basement membrane collagens (type IV), each type containing multiple isoforms. Collagens are fibrous, extracellular matrix proteins with high tensile strength and are the major components of connective tissue, such as tendons and cartilage. All collagens contain a triple helix domain and frequently show lateral self-association in order to form complex connective tissues. Several collagens also play a role in cell adhesion, important for maintaining normal tissue architecture and function.
Immunogen:	Synthetic peptide within Human COL1A1 aa 1191-1238 / 1464.
Positive control:	Mouse kidney tissue.
Subcellular location:	Membrane.
Recommended Dilutions:	
IF-Tissue Clearing	1:400
Adaptive Clearing kit	Tissue clearing kit (Hydrophilic) (Cat#:NH-CR-210701)、Enhanced Tissue clearing kit(Cat#:NH-CR-230701)
Storage Buffer:	1*TBS(pH7.4), 0.05% BSA, 40% Glycerol. Preservative:0.05% Sodium Azide.
Storage Instruction:	Store at +4°C after thawing. Aliquot store at -20°C or -80°C. Avoid repeated freeze / thaw cycles.
Purity:	Protein A affinity purified





Images

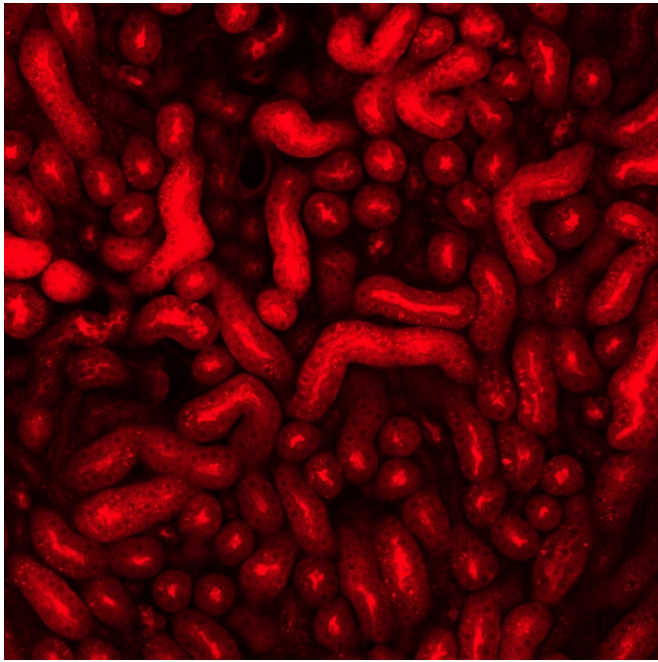


Fig1: Immunofluorescence analysis of fresh mouse kidney tissue labeling alpha COL1A1 (NH-R-58-04) at 1/400 dilution.

The section was treated with Tissue Clearing Kit(Hydrophilic) (Cat#:NH-CR-210701), the tissues were blocked for 2 hours at 4°C, and then probed with the primary antibody (NH- NH-R-58-04,1/400) overnight at 4°C, washed with PBS. Goat Anti-Rabbit IgG H&L (Alexa Fluor® 488) was used as the secondary antibody at 1/400 dilution. Image acquisition was performed with Zeiss 980.

